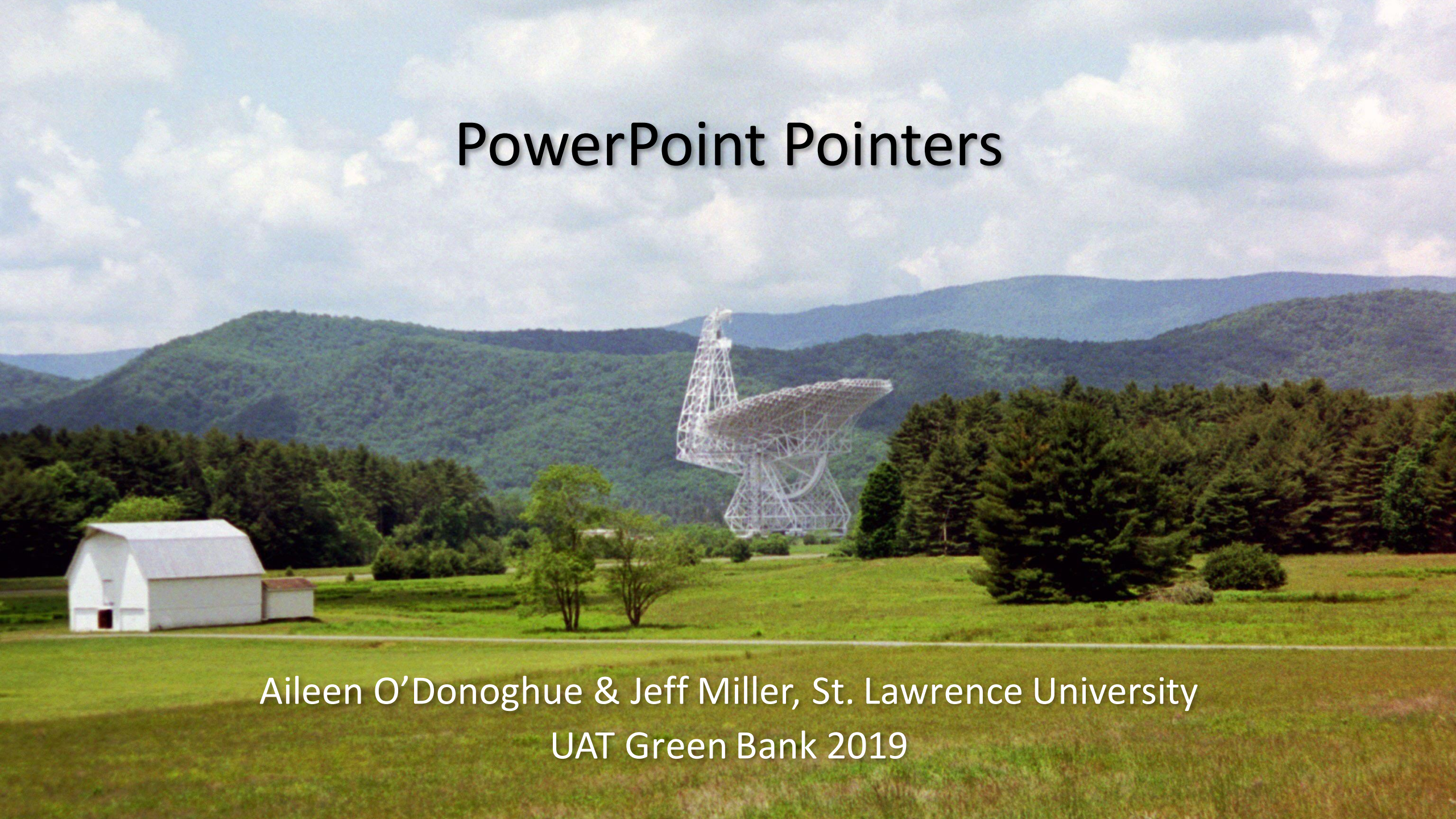


# PowerPoint Pointers



Aileen O'Donoghue & Jeff Miller, St. Lawrence University  
UAT Green Bank 2019



# Required Slides

- Title Slide
  - Topic (e.g. AGC 223819)
  - Team Members
- Introductory slides ... basic information
- Analysis slides ... what else did you discover
  - How did you figure it out?
- Conclusion slides ... what is AGC223918?
- References (papers, web sites, etc.)
  - Acknowledgements if appropriate

# Backgrounds and Fonts

- Fonts
  - *large* enough for old people in the back to read!
  - good *contrast* with background
    - no light blue on slightly darker blue ...
- Backgrounds
  - images should allow words to be read
  - patterns should not limit space for words or images
    - content should overrule design template



Remote Arecibo Observing  
February, 2011  
Pre-Dr. Leisman  
Arecibo Observatory  
14 January, 2014

# Text

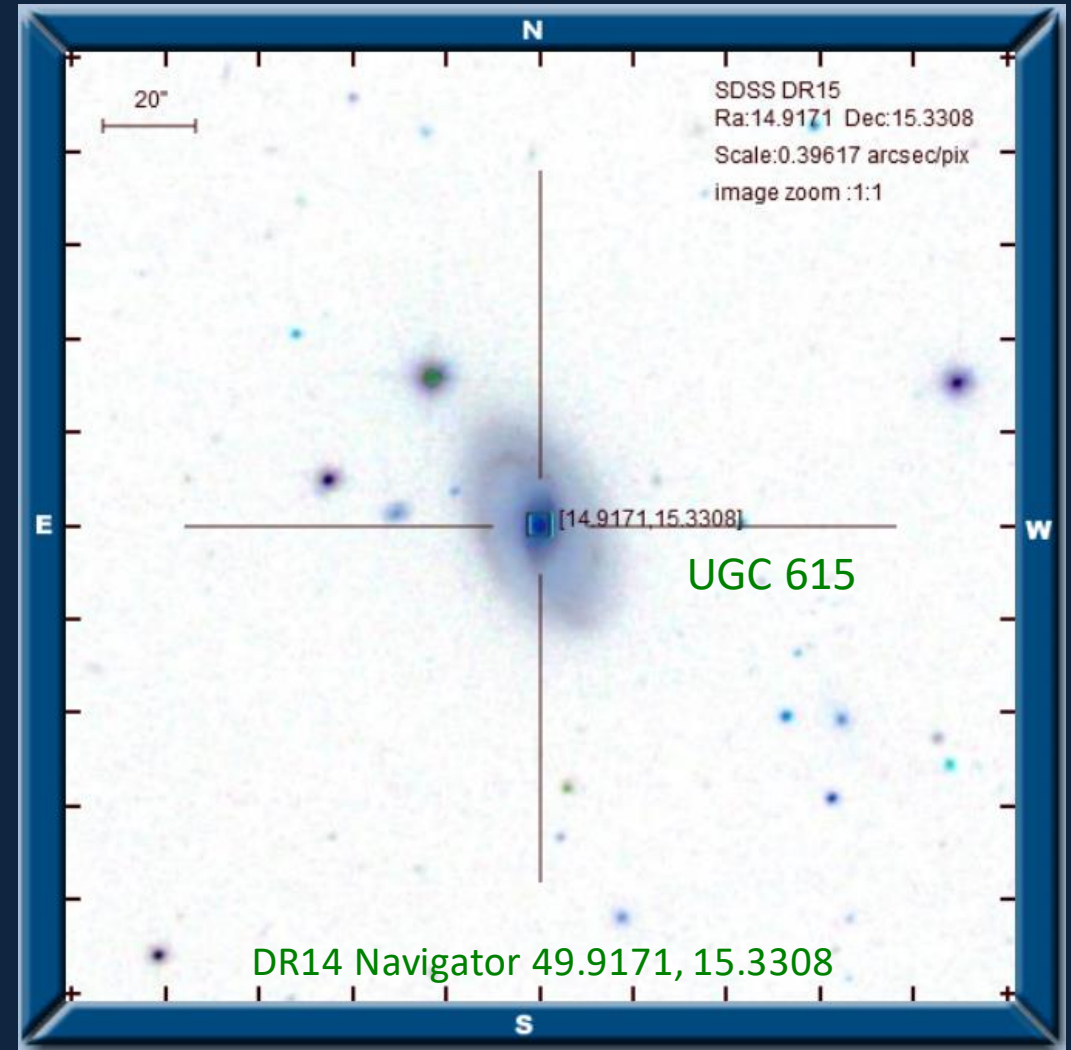
- Bullet Points
  - No long sentences!
    - Break sentences into phrases
- References
  - Put web page or url with images
    - e.g. “DR14 Navigator 49.9171, 15.3308”
  - AAS Style in text (Haynes et al., 2018)
  - AAS Style on references slide

Haynes, M. P., Giovanelli, R., Martin, A., et al. 2011, AJ, 142, 17

Text Boxes allow  
free placement  
of texts!

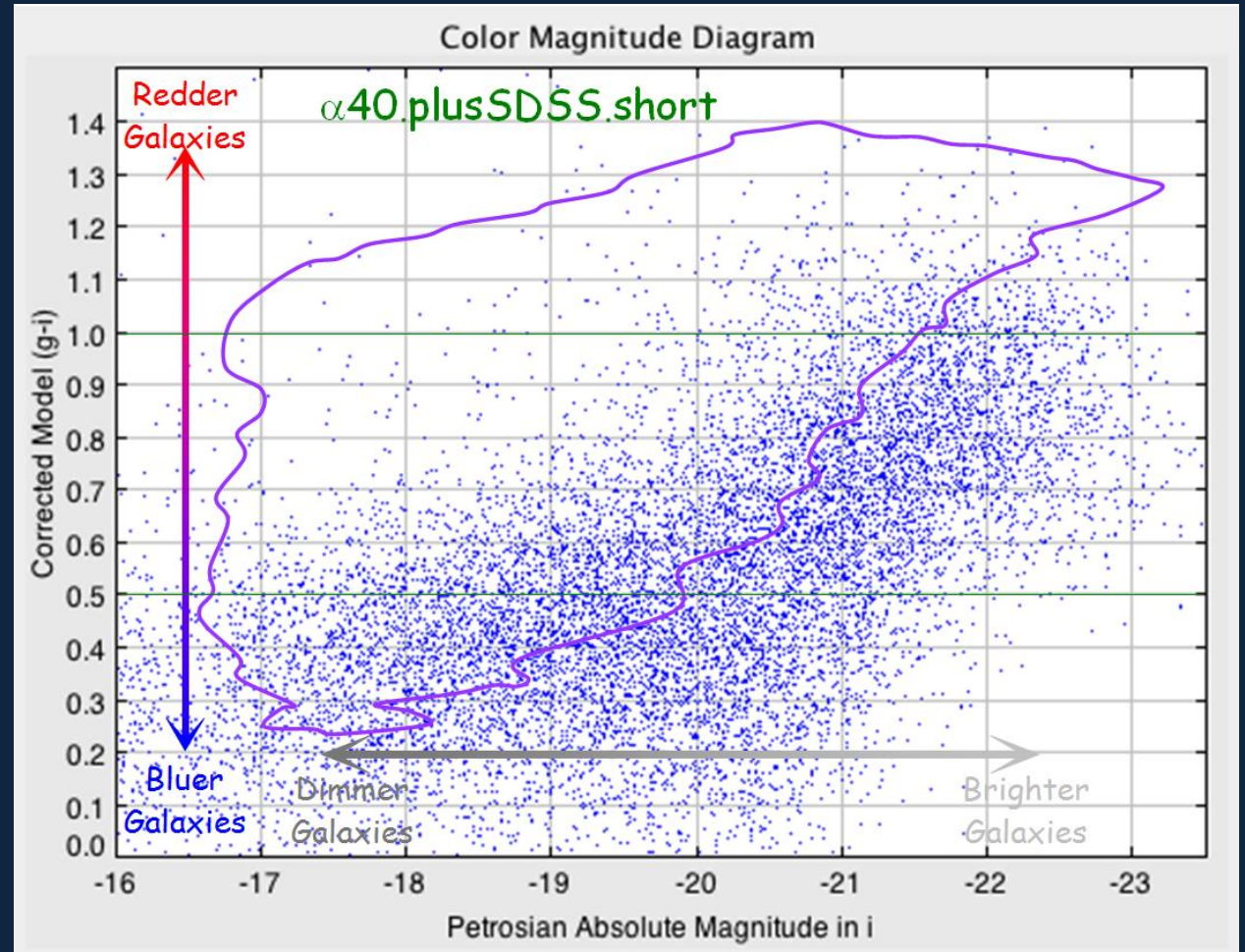
# Images

- Size & Position
  - Make as large as possible
    - can hide slide design!
    - visible from back of room
    - clear what's important
  - Label objects
    - what does image show?
- Use full extent of slide
  - Text moves to accommodate images
  - ppt style doesn't dictate size/placement of images
  - Text boxes allow free placement of texts



# Plots

- Size and Position
  - Readable!
    - Label plot!
    - Axis Labels!
    - Axis values!
      - READABLE!!
  - Explain what is shown
  - Text boxes are handy!



Color-Magnitude diagram of selected  $\alpha.40$  galaxies overlaid on the outline of that for the Coma Supercluster by Gavazzi et al. (2010, Figure 3) showing that ALFALFA is primarily detecting galaxies belonging to the “blue cloud”.

# References & Acknowledgements

- Papers, databases, web pages must be cited
  - Any style will do ...
- Images from web must have credits
  - Database, e.g. “SDSS DR14”, “NED”
  - url is fine and can be in a small font, but visible
- Acknowledge support outside your group
  - Thanks to Group C for image of MKW 11
  - This workshop is funded by NSF Grant AST-1637339



A photograph of a Killdeer bird standing in a bed of small, multi-colored gravel. In the background, a white sign with the text 'ANK OBSERVATORY' is visible. The sign is supported by white posts and is positioned in front of a building with a glass door and white columns. The ground is covered in gravel, and there are some small green plants growing between the stones. The overall scene is outdoors, likely at an observatory or park.

**ANK OBSERVATORY**

**Watch out for the Killdeer!**





Watch out for the Killdeer!