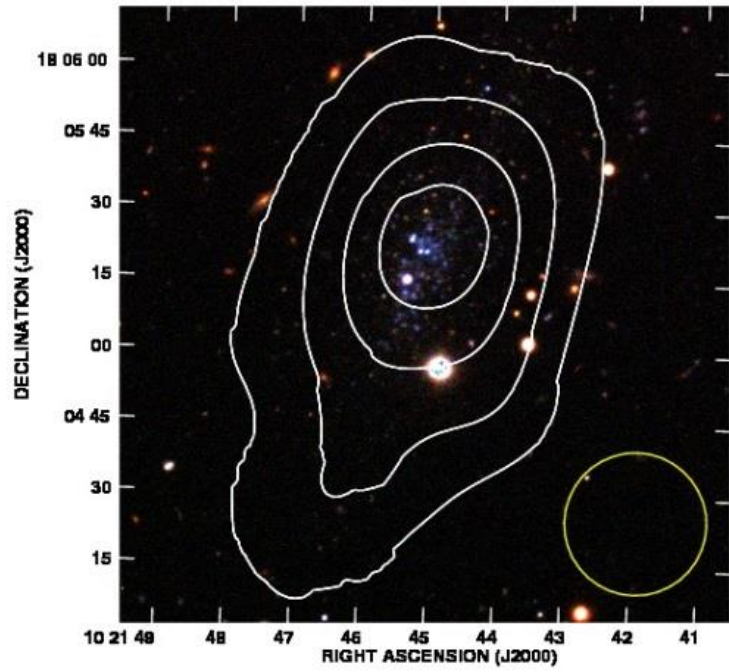
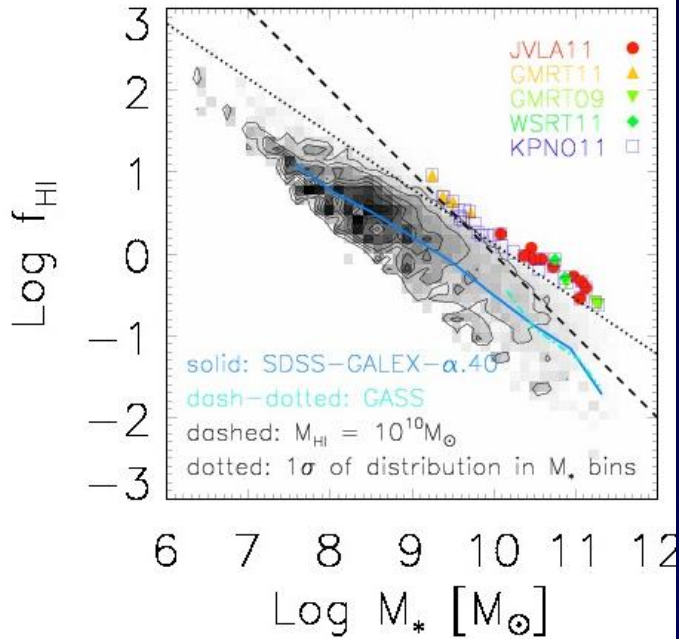


# ALFALFA update



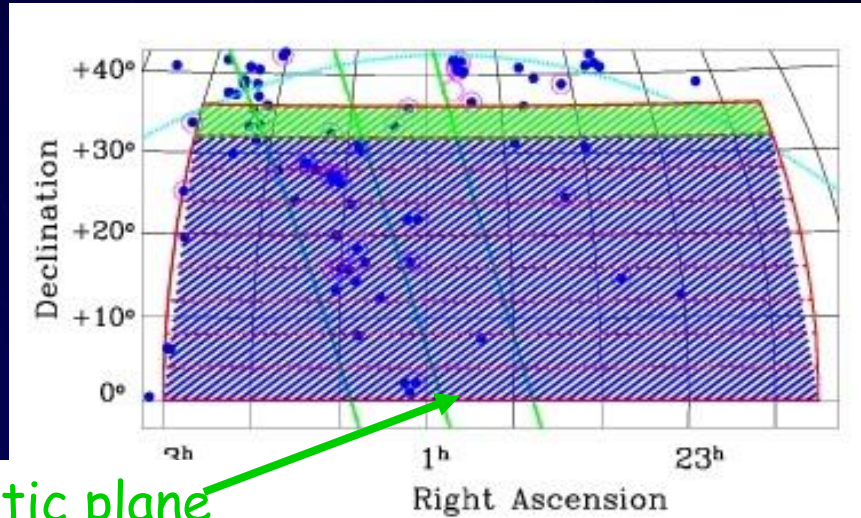
Martha Haynes  
UAT14 14.01.13



# ALFALFA Survey 2005-12



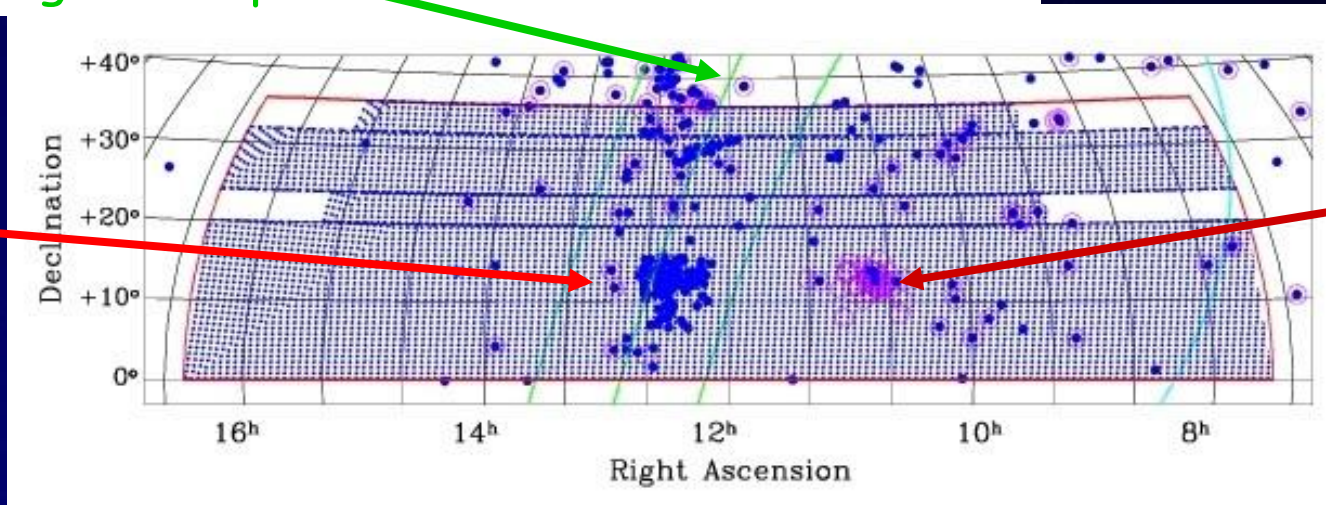
High galactic latitude sky visible from AO



- Does not compete with galactic plane surveys

Supergalactic plane

Virgo cluster



Leo Group





# ALFALFA status 2014



- The legacy drift scan observations are completed (!)
- All of the drift scans are Level I processed (bandpass subtraction, calibration, flagging).  
Big thanks to Lyle, Carlo Giovanardi and Becky
- We are in the process of generating all grids.
- >70% of the survey is gridded and catalogued .  $\alpha.40$  (40% ) published; next data release in preparation ( $\alpha.70$ )
  - Spring: +1, +3, +17, +19, +21
  - Fall: +1, +7, +9, +23Thanks to David Stark, Luke, Mike Jones and Li Xiao
- All of the "a" grids in the spring are catalogued; we are now working on the fall "a" grids.
- Volunteers always welcome; lots of work to be done!



# ALFALFA Followup Programs



- LBW confirmation of low SNR sources (UAT++)
- Survey for Extremely Low-Mass Dwarfs (SHIELD: John Cannon)
- HI-rich, high HI mass galaxies (HIGHMass: **Greg Hallenbeck, Shan Huang**)
- (Almost) dark galaxies (**Luke Leisman**; J. Cannon)
- Hunt for Local Group minihalos (**Betsey Adams**)
- HI debris in groups (**Karen Lee-Waddell**)
- Making H $\alpha$  with ALFALFA (John Salzer)
- ALFALFA-H $\alpha$  (Peppo Gavazzi)
- Triggered H $\alpha$  in ALFALFA galaxies (**Anne Jaskot**)
- ALFALFA-GAMA (**Angus Wright**)
- ALFALFA-SAMI (Barbara Catinella)
- ALFALFA-RESOLVE (**David Stark**)
- ALFALFA-2MTFRS (Chris Springob, **Tao Hong**)
- ALFALFA environments, clustering (**Mike Jones**)
- ALFALFA baryonic TF relation (**Manolis Papastergis**)
- UAT groups project (Becky Koopmann)
- +... (numerous others)

