



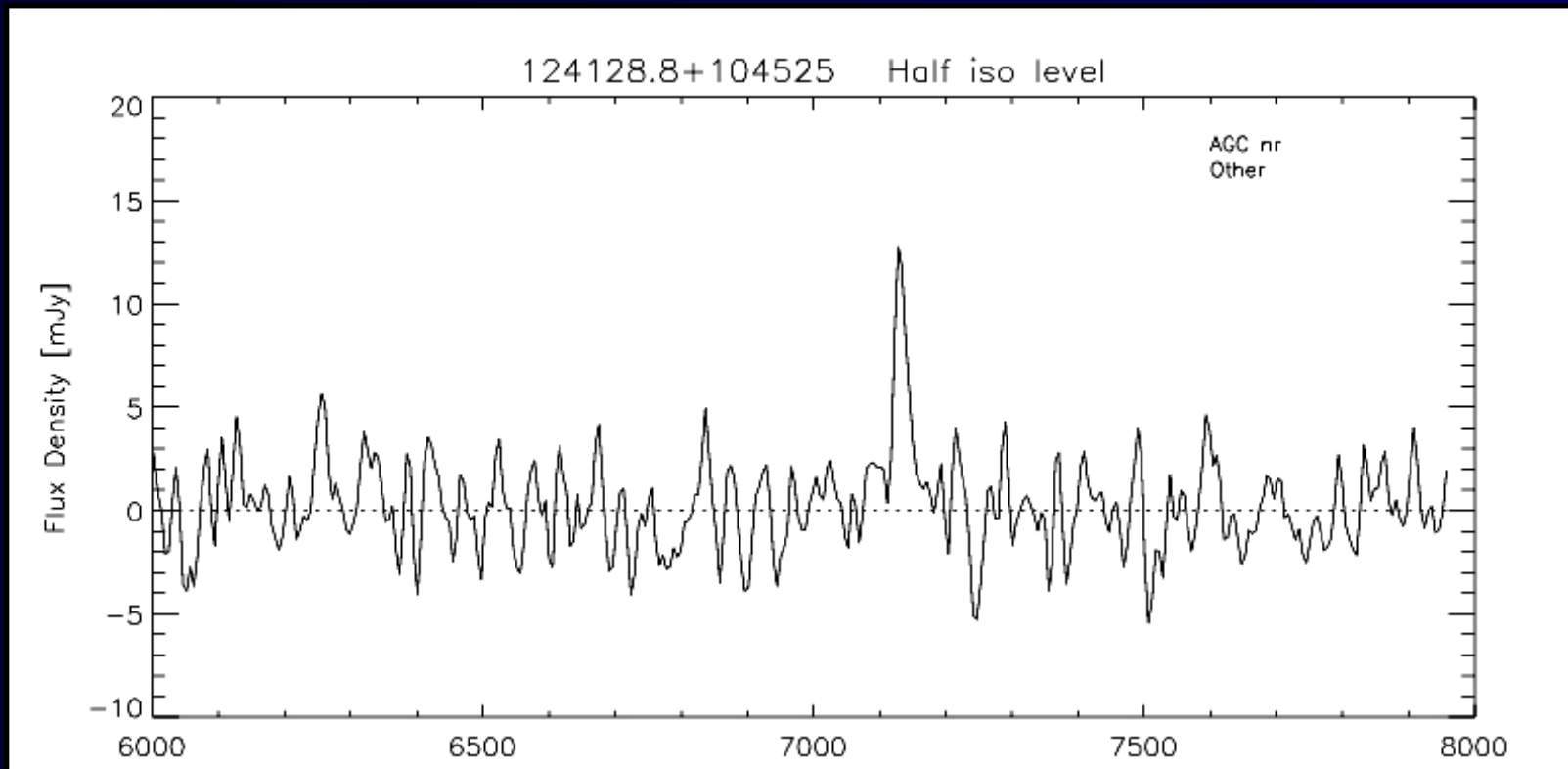
# GBT and Lband wide Follow-up



Brian Kent

# Arecibo Followups

- A2215 on June 23, 24, 25: 9 hours LBW
  - Confirmation observations of marginal yet potentially interesting detections.
  - Pointings along features of tidal remnants

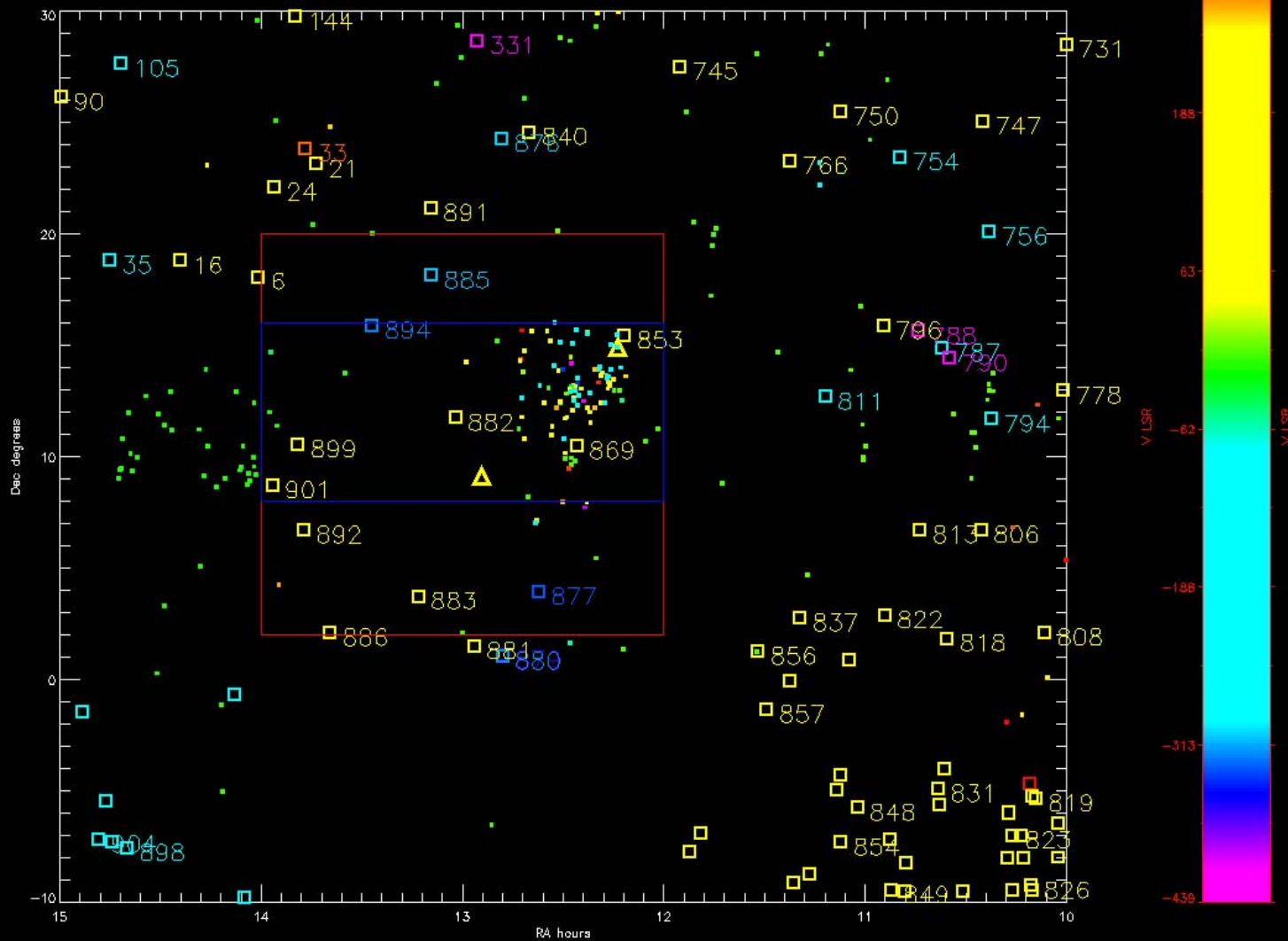


# Green Bank Telescope follow-up

Open Squares – HVC from Putman and de Heij

Triangles – ALFALFA findings

Small squares – AGC corrected to LSR frame



+300 km/s

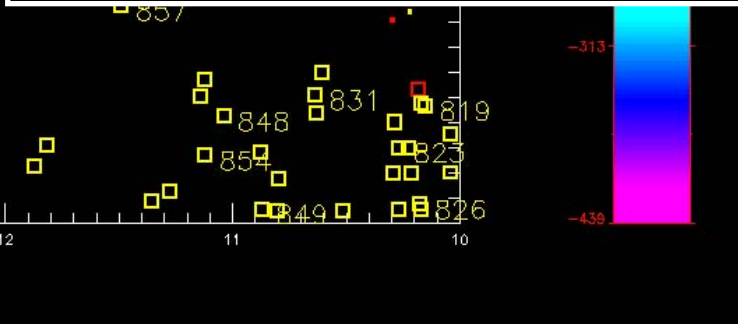
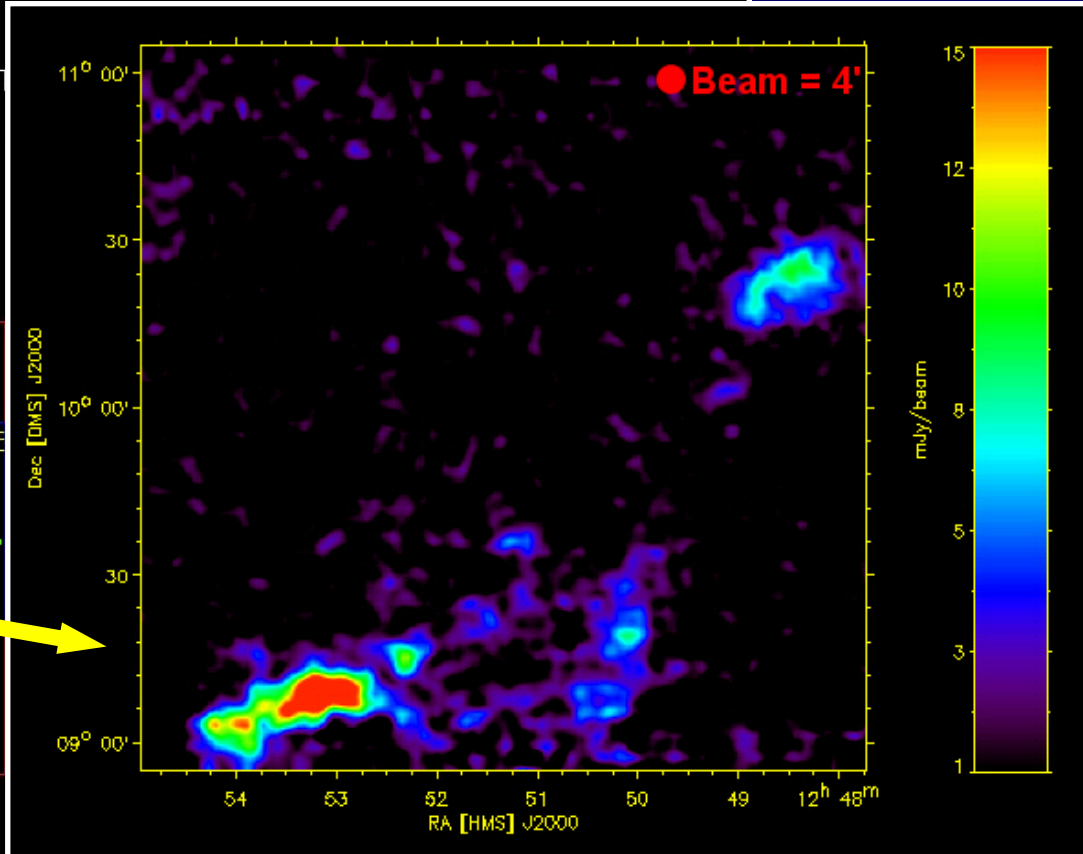
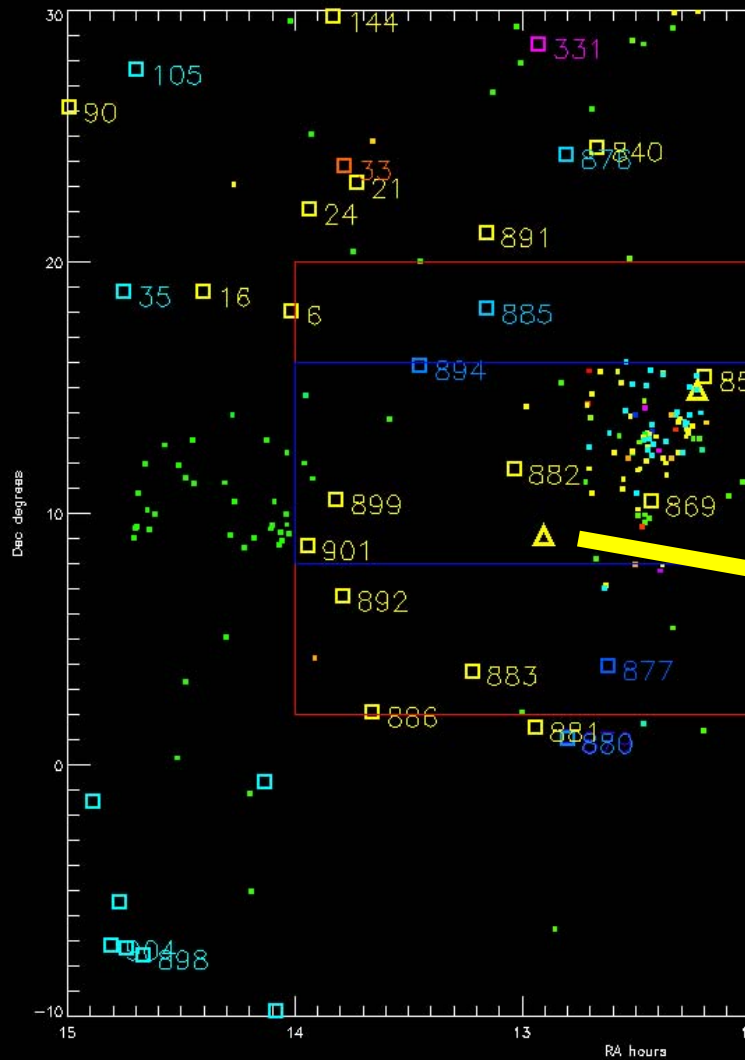
-400 km/s

# Possible cloud detection

Open Squares – HVC from Putman and de Heij

Triangles – ALFALFA findings

Small squares – AGC corrected to LSR frame

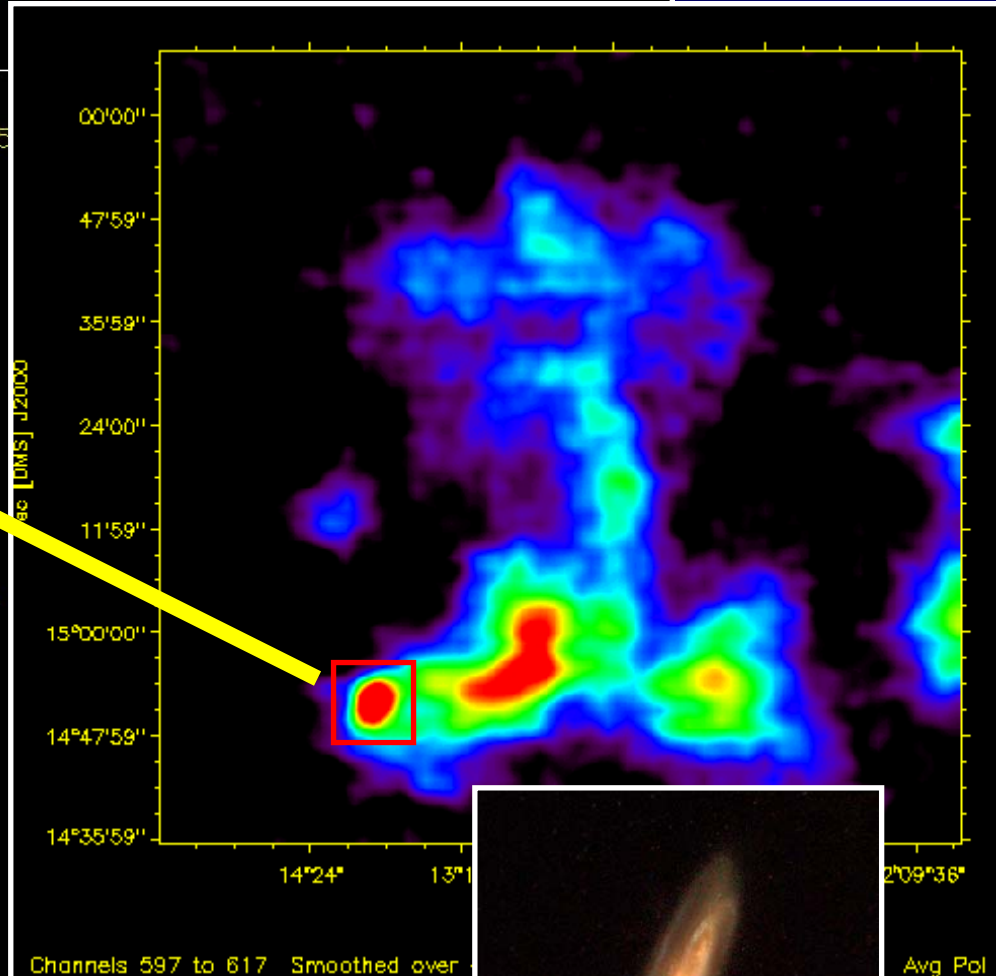
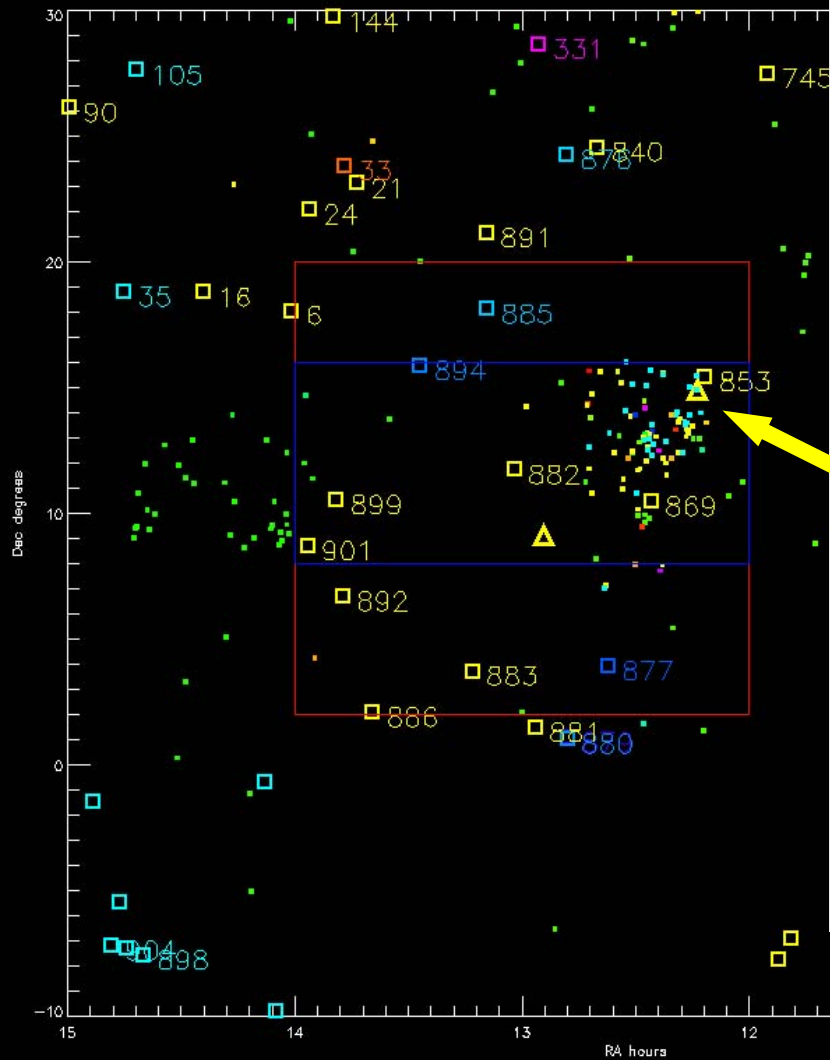


# NGC 4192 and associated tail

Open Squares – HVC from Putman and de Heij

Triangles – ALFALFA findings

Small squares – AGC corrected to LSR frame

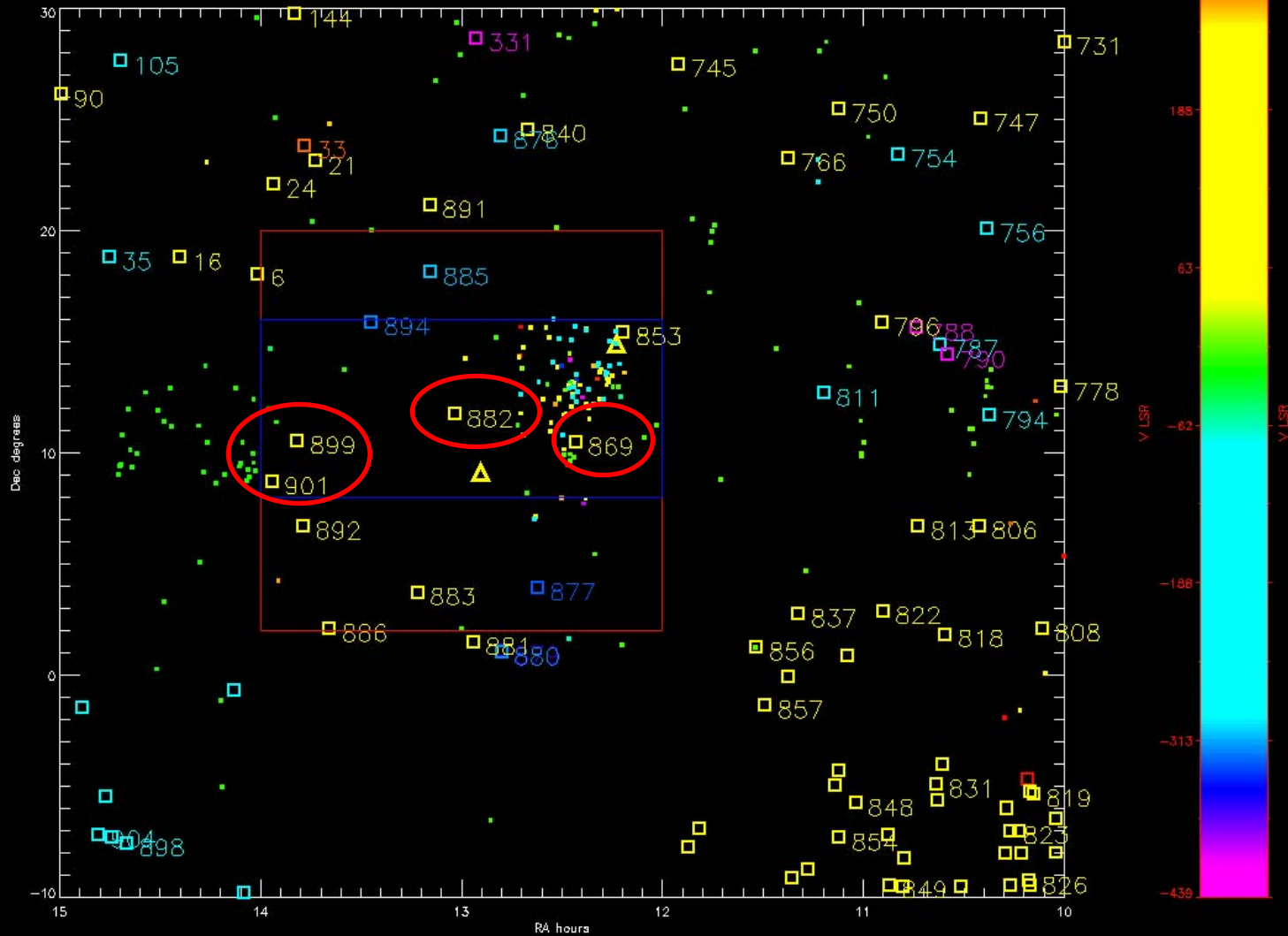


# CHVC not detected?

Open Squares – HVC from Putman and de Heij

Triangles – ALFALFA findings

Small squares – AGC corrected to LSR frame





# GBT Observations

- Examine 8 HVC candidates
- Examine if the two ALFALFA cloud candidates are surrounded by low  $N_{\text{H}}$  gas. The low sidelobe response will be better suited for doing this than Arecibo.
- Observing scheduled for June/July 2006 Project GBT06B-035

Target	RA(J2000)	DEC(J2000)	$V_{\text{ek}}$ (km/s)	Peak $T_a$ (mK)	Mode
ALFALFA 1254+09	12 54 09	+09 08 02	205(HEL)	400	Long int.
ALFALFA 1213+14	12 13 48	+14 54 01	100(HEL)	400	Long int.
DBB 881	12 56.5	+01 29	187(LSR)	210	Pointmap
DBB 840	12 40.0	+24 33	120(LSR)	220	Pointmap
DBB 886	13 39.4	+02 04	181(LSR)	150	Pointmap
DBB 33	13 47.0	+23 49	117(LSR)	180	Pointmap
DBB 778	10 00.9	+12 57	244(LSR)	230	Pointmap
DBB 831	10 38.2	-04 56	179(LSR)	200	Pointmap
DBB 826	10 10.4	-09 16	176(LSR)	230	Pointmap
DBB 848	11 02.3	-05 46	217(LSR)	180	Pointmap